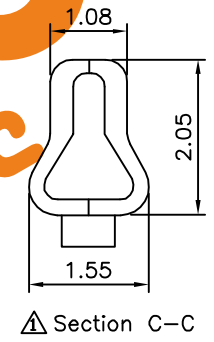
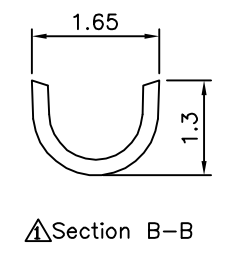
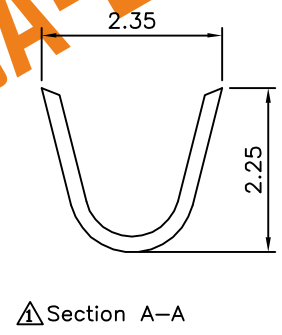
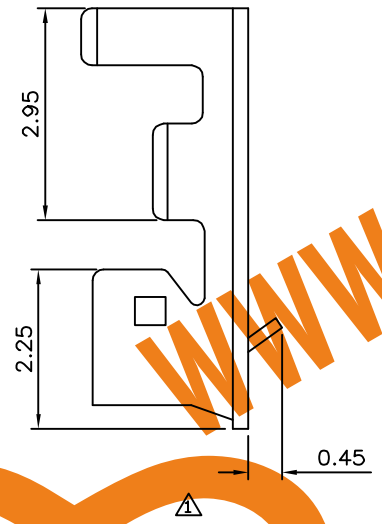
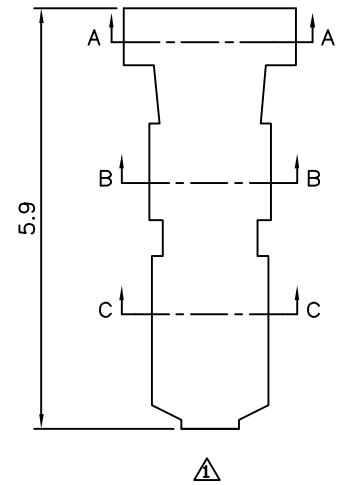


**△ SPECIFICATION**  
 Applicable Wire: AWG#22~28  
 Material: Phosphor Bronze, Tin Plated  
 Hardness: H  
 Thickness: 0.2mm  
 Q'ty: 10000 PCS/Reel  
 RoHS Compliant



AsA Electronic

**AsA** [WWW.AsA-Elec.com](http://WWW.AsA-Elec.com)  
**Electronic**

**AsA Electronic Co.**

Tel : (+98) 21 66 73 56 82 Mob : (+98) 912 03 161 02

**Telegram:09396994470**

DRAWING No.		APPROVED BY		UNLESS OTHERWISE SPECIFIED TOLERANCES ARE .X ±0.38 .XX ±0.25 ANG.	NO.	REV.	REVISIONS	CHK	DATE				
		EMILY								A1	Modify P/N:PHT-H --> PHT-R10K-H	HZF	02/12/2015
CHECKED BY		HZ								A0	NEW RELEASE	BECKY	2004/09/10
DRAWING BY		CYP											
SCALE	NONE	REV.	A1	UNIT	mm								